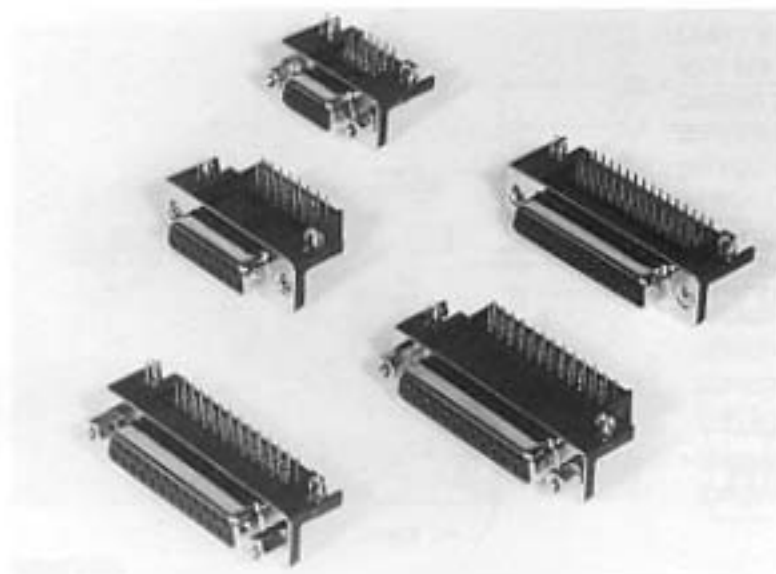


2.1



Garry versatile d-subminiature connectors are duly recognized on the worldwide market. These connectors cover a wide range of computer, peripheral, instrumentation, machinery, and telecommunications market requirements. The different configurations, contact technology, metal shell plating, and mounting clip features will permit you to find the connector you need.

- Special spring box design for female contact secures stable insertion force, mating performance, and accurate gold plating thickness.
- Unique innovation of tulip lock (4 finger) for grounding clips.
- Flush surface after rivet mounting.
- Nickel plated metal shell assures higher shielding effectiveness for electro-magnetic interference control to meet FCC and other strict applications (i.e., salt spray test).
- Innovative dust cover design offering good performance on board mounting and soldering process procedures.
- Recognized under **UL** the component program of Underwriters Laboratories.

Specifications

Standard Data

- Insulation resistance: 5000 megohms minimum.
- Dielectric withstanding voltage: 1000 vac R.M.S.
- Voltage rating: 600v.
- Current rating: 5 amp.
- Contact resistance: 10 milliohms maximum.
- Temperature range: -55 °C to +125 °C.

Materials and Finishes

Insulator:

Glass reinforced thermoplastic UL94 VO.
Standard color: Black.

Shell:

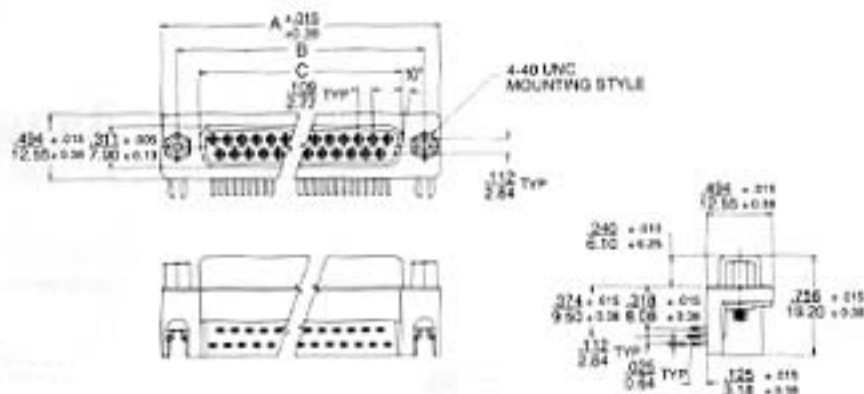
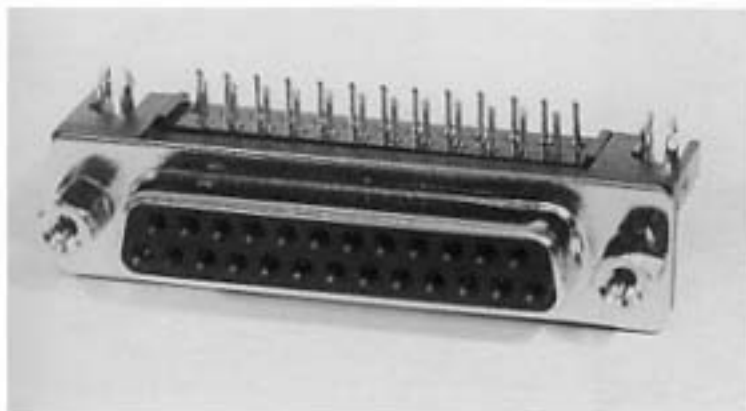
Steel with nickel finish. Other plating on request.

Contact:

Pin contact: brass. Socket contact: phosphor bronze. Gold plated over nickel on contact area. Tin plated on solder tails.

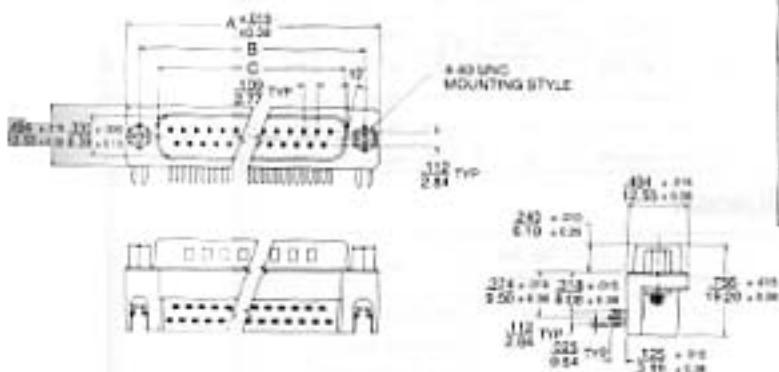
Grounding Clip:

Copper alloy with tin plating.



Receptacle

P/N	NO. OF CONTACT	A		B		C	
		in	mm	in	mm	in	mm
17-210-XXX-095	9	1.214	30.84	0.984	24.99	0.640	16.26
17-210-XXX-155	15	1.545	39.24	1.312	33.32	0.987	24.96
17-210-XXX-195	19	1.767	44.88	1.550	39.36	1.187	30.15
17-210-XXX-255	25	2.088	53.04	1.852	47.04	1.508	38.50
17-210-XXX-315	37	2.730	69.34	2.500	63.50	2.156	54.78



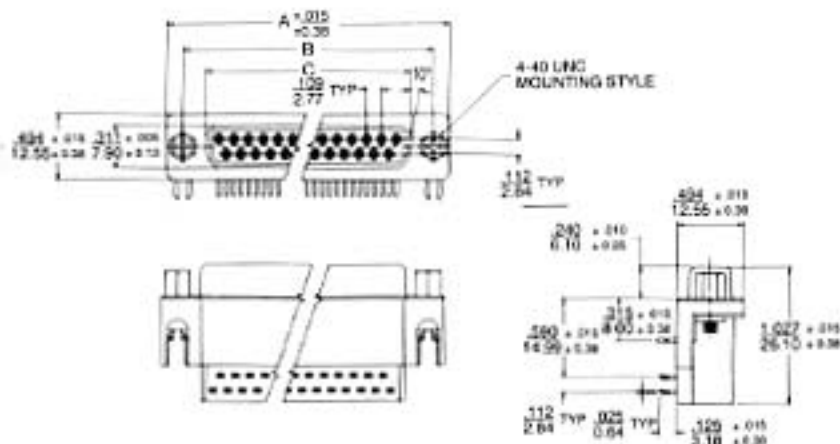
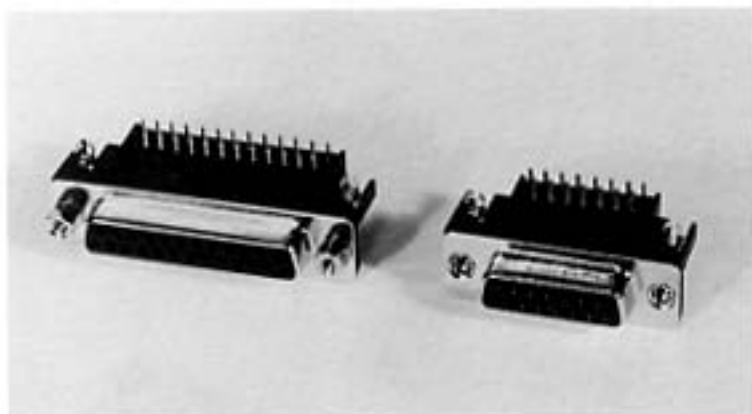
Plug

P/N	NO. OF CONTACT	A		B		C	
		in	mm	in	mm	in	mm
17-210-XXX-09P	9	1.214	30.84	0.984	24.99	0.640	16.26
17-210-XXX-15P	15	1.545	39.24	1.312	33.32	0.987	24.96
17-210-XXX-19P	19	1.767	44.88	1.550	39.36	1.187	30.15
17-210-XXX-25P	25	2.088	53.04	1.852	47.04	1.508	38.50
17-210-XXX-31P	37	2.730	69.34	2.500	63.50	2.156	54.78

All dimensions are shown in in/mm, Tolerance: ± 0.010/0.25 (unless otherwise specified)

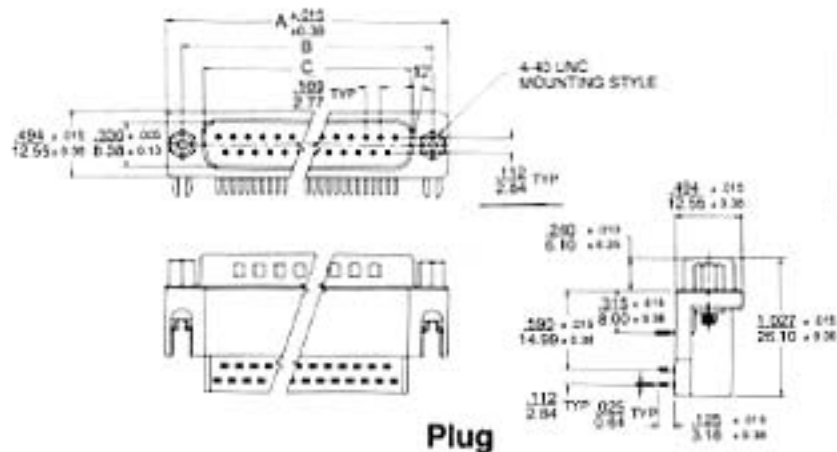
See Page 2.7 and 2.8 for Grounding Clip and Hex Nut Options

2.3



Receptacle

P/N	NO. OF CONTACT	A		B		C	
		in	mm	in	mm	in	mm
17-213-XXX-09R	9	1.214	30.84	0.984	24.99	0.640	16.26
17-213-XXX-15R	15	1.545	39.24	1.312	33.32	0.957	24.56
17-213-XXX-25R	25	2.088	53.04	1.852	47.04	1.508	38.30
17-213-XXX-37R	37	2.720	69.34	2.500	63.50	2.156	54.76



P/N	NO. OF CONTACT	A		B		C	
		in	mm	in	mm	in	mm
17-213-XXX-09P	9	1.214	30.84	0.984	24.99	0.666	16.92
17-213-XXX-15P	15	1.545	39.24	1.312	33.32	0.994	25.25
17-213-XXX-25P	25	2.088	53.04	1.852	47.04	1.534	38.95
17-213-XXX-37P	37	2.720	69.34	2.500	63.50	2.182	55.42

All dimensions are shown in in/mm, Tolerance: $\pm 0.010/0.25$ (unless otherwise specified)

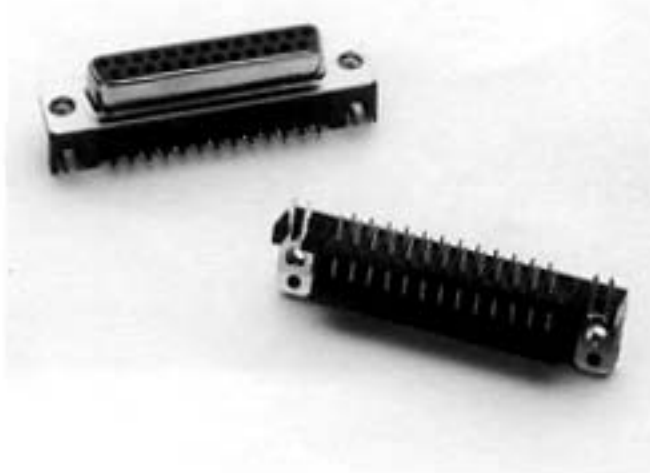
See Page 2.7 and 2.8 for Grounding Clip and Hex Nut Options

 Garry Electronics

 a wire-pro co.

23 Front Street • Salem, NJ 08079 • (609)935-7603 • FAX: (609) 935-7555

2.5



Garry's 17-1212 series offers a new space saving footprint that is only 5mm (.195") from the flange to the center line of the first row of contacts. The 17-1212 series still mates with the standard "D" subminiature connectors and standard cable harnesses. The 17-1212 Notebook series is available with 9, 15, 25 and 37 pin positions.

- Metal shell provides interfacial EMI/RFI shielding.
- Unique innovation of tulip lock (4 finger) for grounding clips

Materials

Insulator:

Glass reinforced thermoplastic, rated UL94V-0. PPS. Color; Black.

Shell:

Steel with nickel finish.

Contact:

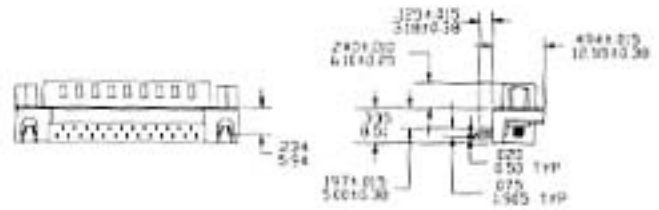
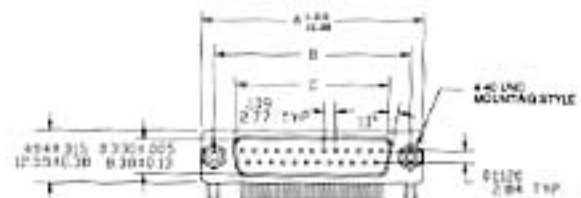
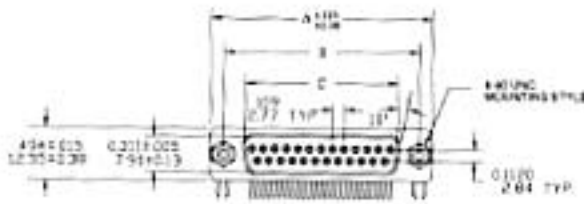
Phosphor bronze.

Plating:

Gold on contact area and tin on solder tail.

Grounding Clip:

Copper alloy with tin plating.



Receptacle

Plug

P/N	NO OF CONTACT	MM A	MM B	MM C
17-1212-XXX-09-A	9	32.84	24.99	16.25
17-1212-XXX-15-A	15	39.24	33.37	24.26
17-1212-XXX-25-A	25	53.04	47.18	38.30
17-1212-XXX-37-A	37	69.34	63.90	54.76

P/N	NO OF CONTACT	MM A	MM B	MM C
17-1212-XXX-09P-A	9	30.84	24.99	16.70
17-1212-XXX-15P-A	15	39.24	33.37	25.25
17-1212-XXX-25P-A	25	53.04	47.04	38.96
17-1212-XXX-37P-A	37	69.34	63.93	55.42

See Page 2.7 and 2.8 for Grounding Clip and Hex Nut Options

